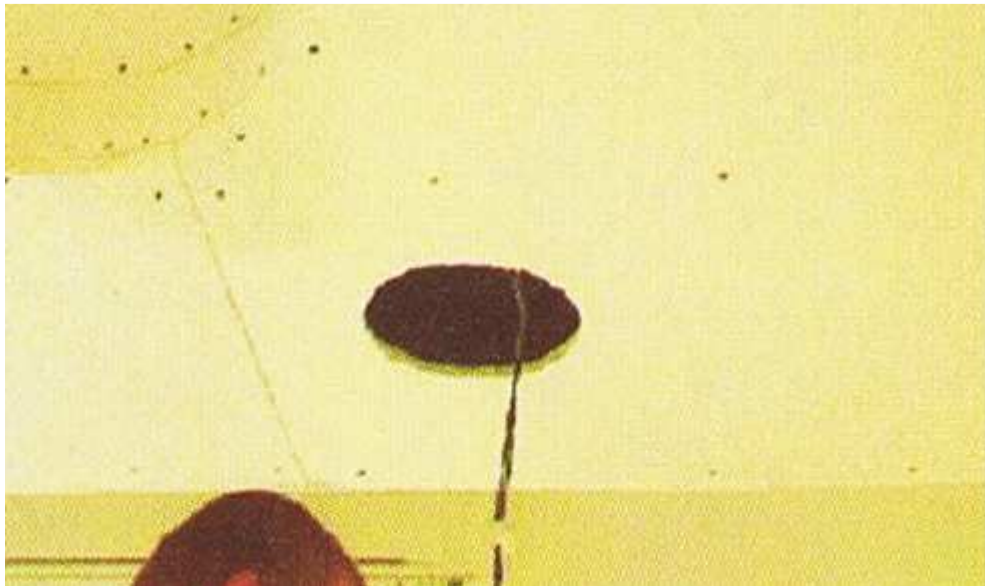


THE CONFIDENTIAL LIGHTING RANGE

Handle with care!!

IN-SET GYPSUM LUMINAIRES -INSTALLATION INSTRUCTIONS

1. Cut out gyprock ceiling to the cut out size specified in the catalogue for the light fitting you are installing. The example shown is "Private 1".



2. Pull the cable through the middle of the fitting being careful not to damage the interior of the fitting as they are fragile and can mark. Wearing white or plastic gloves to prevent marks and scratches is preferred.



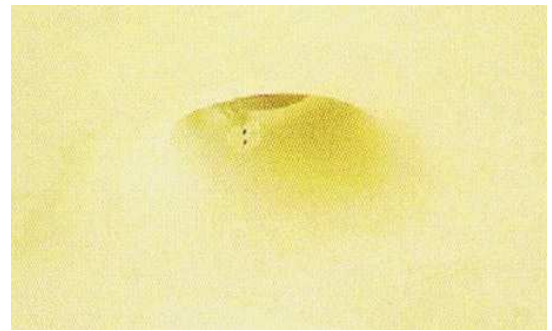
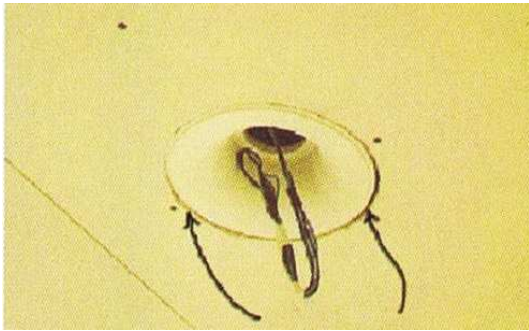
3. The fitting should sit flush with the gyprock ceiling with the set bead slightly proud of the ceiling. (Note: These fittings are designed for 10mm plasterboard. It may be necessary to cut out the back of the gyprock ceiling to make the fitting sit flush).



4. Place screws through the gyprock ceiling to engage with the metal wings. Recess screws into gyprock.



5. The plasterer should set a minimum of 500mm feathered out from set bead for a seamless integration into the ceiling.



6. When used internally it is not necessary to paint the interior of the fitting. If painting is required, the fitting should be sprayed to avoid brush marks.

CONFIDENTIAL LIGHT FITTINGS ARE FRAGILE, HAND CRAFTED ITEMS. AVOID TOUCHING THE INTERIOR OF THE LIGHT FITTING WHEREVER POSSIBLE TO PREVENT DAMAGE WHICH WILL BE HIGHLIGHTED WHEN FITTING IS TURNED ON.